
ST JOHN'S COLLEGE CLASSIFIEDS

November 2020



SIXTH EDITION

WELCOME TO THE COLLEGE CLASSIFIEDS

Welcome to the St John's College Classifieds, our digital publication that offers our community the opportunity to advertise to our Johannians.

Whether you are advertising accommodation for sale or rent, holiday accommodation, venue hire, beauty services, sports coaching, vehicles for sale, au pair services or employment opportunities, we have an ad space for you.

The College Classifieds offers our community the opportunity to advertise products or services in an electronic format, linked to the St John's College website. The College Classifieds will be shared with the St John's College community once a month.

All proceeds go to the St John's College Foundation. The Foundation supports the St John's College Academies and the Centenary Scholarship Programme. Every contribution to the Foundation reinforces St John's College's sustainability as a world-class Christian, African School.

January will be our first edition for 2021. Material is to be received and paid for no later than the 25th of the month. No adverts will be accepted without payment. Deadlines may vary due to school holidays.



Leshiba
MOUNTAIN RETREATS

Take a deep breath.

With **50% off** all our current rates you can get your feet above the clouds and enjoy some fresh mountain air in one of SA's most beautiful, remote and wild open spaces.

Leshiba is an award-winning eco lodge with one of South Africa's highest biodiversity of flora and fauna. Many accommodation options, bike tracks, game drives, a rich variety of wildlife and endemic species. Malaria free and Fair Trade accredited.



+27(0) 11 483 1841

@ leshibamountainretreats

info@leshiba.co.za

www.leshiba.co.za

The ultimate basketball destination for
footwear, apparel, headwear, bags and accessories.
Visit our stores in The Zone Rosebank, Eastgate Mall,
Sandton, Melrose Arch and Mall of Africa.
Full basketball range available online
www.sheshalifestyle.com



R2399.99

NIKE JORDAN Maxin 200



R2699.99

PUMA RS-Dreamer
x "Super Mario 64"II



R2099.99

ANTA KT4
"Black History Month"



R3999.99

M&N
Jordan Authentic
Jersey '84-85 Rookie
Home'



R3999.99

M&N 1984-1985
Chicago Bulls Michael
Jordan Hardwood
Classics Authentic
Jersey



R599.99

New Era LA
Lakers Tonal Black
A-Frame Trucker



R699.99

Jordan
Legacy 8P
Basketball

SHOP ONLINE

www.sheshalifestyle.com

10% DISCOUNT CODE

HOOPS-10

SITE WIDE

B BALL

ST JOHN'S COLLEGE CLASSIFIEDS

November 2020



RATE CARD

AD SIZE	RATES
30 words plain text	R200
30 words plain text + image (87x67mm, 120dpi)	R250
30 words + image (87x67mm, 120dpi) + hyperlink	R275
Half page - material supplied in PDF (210x148mm, 120dpi)	R750
Full page - material supplied in PDF (210x297mm, 120dpi)	R1 500
Corporate rates available on request.	

Terms & Conditions

All advertisements are accepted, and can be removed, at the sole and absolute discretion of St John's College. Any advert that does not meet the values and ethos of our school will not be accepted. The products and services offered on this page does not constitute an endorsement or recommendation by St John's College. No late adverts will be accepted. No handwritten adverts will be accepted. All advertisements are subject to the Ts & Cs which can be viewed [here](#).

EDITIONS

JANUARY TO NOVEMBER

PAYMENT

Payment must be made via EFT and proof of payment, along with the ad material, emailed to classifieds@stjohnscollege.co.za. Please use SJCFC <surname> as your reference.

BANKING DETAILS

St John's College Foundation Trust
Standard Bank Killarney
Branch Code: 007205
Account: 200303058
Swift Code: SBZAZAJJ

The St John's College Foundation is an independent trust, reference number IT 7894/04(T); a Non-Profit Organisation, reference number: 021-654-NPO; a Public Benefit Organisation, reference number: 130003224 and SARS reference number 3006621845.

DELIVERING
21-22 DEC
ARTISAN
FREEZER
MEALS

Knysna
Plett
St Francis

tutto
food co.

NOW
ONLINE



www.tutto.co.za



Wear your 'hug'
earring anyway
you choose

Everything went virtual in 2020, including hugs.
Symbolising the connection between two people, these 'virtual hug' earrings and pendant
remind us of what is important. Our need to connect!
Don't let Corona stop you from connecting - send someone the gift of a loving 'virtual' hug.

www.vivejewels.com robyn@vivejewels.com Robyn 083 680 1017

TO RENT "THE BELLHOUSE"

The Valley Road, Johannesburg
R60 000 per month plus utilities



Five beds, two baths, gym, lounge, dining, offices, library, cellar, garages, lap pool, tennis court, boomed road with high security, guard house, two bed cottage/staff, generator, water supply, alarm & cctv, curtains, garden & pool maintenance. Close to schools including The Ridge, Roedean, St John's, Jan Cilliers, St Katharines.

Contact james@vadersbond.com + 27 11 646 0077



TRAVEL LIKE A LOCAL SOUTH AFRICAN

Support local, Travel local! Let us begin the process of redefining tourism that supports South Africa and all of its people. lifikile iXesha!

Contact: Brandon on 079 377 9999

<https://travellikealocalsouthafrica.co.za/>



Made in SA for South Africans, "Chill In" brings you dual-purpose, unisex options of elasticated, low-waisted, chill-pants with funky, fun and dynamic prints with draw-strings to ensure optimal comfort and fit.

<https://chillin.co.za/shop/>



FINSBURY ESTATE

Exclusive fly fishing and mountain biking estate near Mashishing (Lydenburg)



Quarter share in fully furnished, 5-bedroom house for sale

R475,000

For further details contact
sandraririe@gmail.com
0834702740



**WONDERING HOW TO KEEP
YOUR KIDS BUSY DURING HOLIDAYS?**



BOOK A JUMPING CASTLE OR A WATER SLIDE!

083 260 9007 INFO@WILDCHILDS.CO.ZA

WWW.WILDCHILDS.CO.ZA

**PERFECT WAY TO HAVE FUN IN THE GARDEN.
LONGER BOOKINGS AVAILABLE OVER HOLIDAYS.**

**AMAZING VARIETY OF THEMED CASTLES AND WATER SLIDES FOR BOYS AND GIRLS.
FULL SPECTRUM OF PARTY SERVICES, EQUIPMENT AND ENTERTAINMENT. CONTACT US SOON!**



EMMALINES FLORIST



Order flowers or hampers

**ST JOHNS DISCOUNT USE THE
CODE SJC2020 FOR 15% OFF ANY
ORDER VALID UNTIL FEBRUARY
2021**

CONTACT ZOE 0720584138

EMMALINES
THOUGHTFULLY CREATIVE



Pamela Cochrane Skincare Clinic
Office 4b, Ground Floor
3 Melrose Boulevard, Melrose Arch, 2076
Tel: 011 684 2901 / 082 460 5028
Email: pamelacochranetherapy@gmail.com

At Pamela Cochrane Skincare Clinic we provide effective treatments for problematic congested skin, including Acne, Pigmented skin on body and face, sun damaged skin with wrinkling and dehydration. We provide laser deep cleansing and Radio Frequency and LFD treatments to enhance results especially with scars and sensitive skin as well as ingrown hair removal. Homecare products are available to ensure effective results. These include the SVR Sebiaclear Range, Lamelle's Acnevelle & Clarity Range as well as Filorga Medi-Cosmetique (aesthetics) and Guinot products.



SINGER®

ORIGINAL SINCE 1851

AND NOW

**INTRODUCING THE
SINGER FEATHERWEIGHT C240**

sewing machine! With it's sleek, compact design and weighing less than 7kg, it's perfect for sewing in smaller spaces as well as taking with you to classes.



SINGER THEN...
Mom and me sewing, 1988



S.Z. Sewing Machine c.c.
111 Victoria Street, Germiston.
011 825 3407
www.singersa.com



URBAN BLOSSOM HONEY

My bees forage among many beautifully scented fruit trees, herbs and flowers. The resulting honey is a unique delicious blend of flavours conjuring to mind a summer meadow in bloom.

Email: imcochrane@iafrica.com



LOOKING FOR AN AUPAIR?

I am an intern at the Pre-Prep looking to Aupair from January 2021. I would be happy to fetch your child from school, assist with their afternoon activities, and homework.

Contact: Lucia on 074 360 0933

Caring for a person with dementia can be extremely demanding. Respite care provides relief for carers so that they can look after their own health and wellbeing.

Email: gerhard@livewell.care

<https://bit.ly/livewellstjohns>

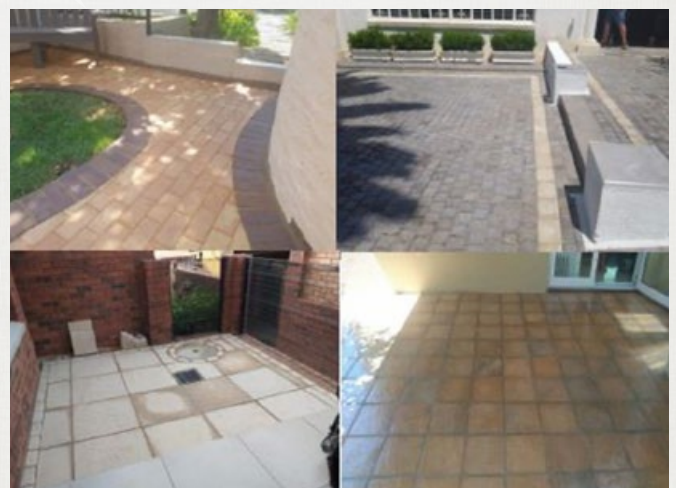


Pave Consult offers premium advice, design and installation of paving for commercial and domestic projects including driveways, roadways, pavements, parking, patios, courtyards and pool surrounds.

Contact: James on 082 606 1228

E: james@paveconsult.co.za

W: www.paveconsult.co.za



QUINTESSENTIAL FAMILY HOME

Designed with the modern family in mind, this lovely, well-maintained family home offers one fabulous accommodation and living spaces all set in an enchanting garden! The two open-plan living-rooms are spacious and well-configured offering 2 lounges and two possible dining areas with all opening up onto the front entertainment deck. The spacious and updated kitchen allows for meal preparation while mingling with guests and family. The 3 bedrooms are in a private wing off the living area, they are north facing and light-filled. The main is en-suite, spacious and private. The front garden offers a decked patio, tree house and large grassed area. The back garden is the perfect space for family fun and entertaining the crew under the thatch lapa by the pool. A large cottage, staff accommodation with kitchenette, and ample off street parking complete this enchanting family home!

Craighall Park is one of the oldest residential suburbs in Johannesburg and is a stones-throw away from both Sandton and Rosebank CBD's The Delta provides a beautiful green belt where families picnic, exercise, and socialise. There are numerous top-class nursery, pre-primary, and independent and government primary schools. The wonderful restaurants and eateries attract many people to the suburb. There is also an active residents association. The larger stands and bigger homes make Craighall Park your quintessential family suburb!

Alex Dicks (082 878 3083) and
Tarynn McMillan (072 173 1959)

<https://www.pamgolding.co.za/property-details/3-bedroom-house-for-sale-craighall-park/hp1510230>



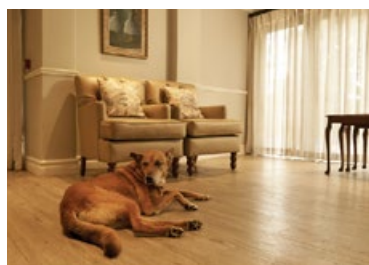
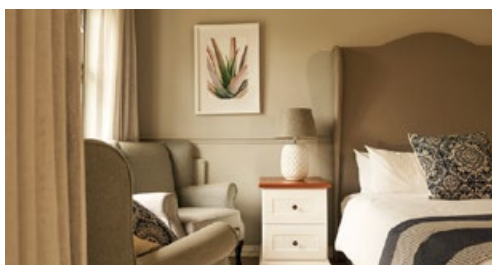
CONSIDERING A POST-MATRIC A LEVEL QUALIFICATION?

St John's Sixth Form offers a one-year accelerated A Level qualification that is internationally recognised, opening doors to top universities across South Africa and the world.

Applications open, apply today. www.stjohnscollege.co.za/sixth-form



ST JOHN'S SIXTH FORM



Livewell with Personalised Dementia Care

Livewell Estates are a specialist family of dementia and Alzheimer's care facilities based in Somerset West and Bryanston. Livewell specialises in personalised and tailored care which is informed by the latest advances and research in the field of memory diseases and disorders. At Livewell, our highest commitment is to the individual. We combine specialised care with warmth and a luxurious environment. The result is a community that encourages dignity and meaningfulness in the lives of our memory-care residents.

At Livewell, we ensure the highest possible quality of life for our residents through a range of meticulously designed specialised care programs and activities based around the needs of each particular individual.

Specialised Services

- 24/7 specialised dementia care
- Day and holiday care
- Permanent residence
- Tranquil gardens
- Frail care
- Support groups
- Companionship
- Medication management
- Dental hygiene
- Occupational therapy
- Personal grooming
- Personalised activities programme
- Sensory rooms
- Pet friendly

Livewell™

Personalised
Dementia
Care

Somerset West

41 Lourens Street
Cape Town
Tel: 021 851 6886
enquiriesct@livewell.care

Bryanston

113 Mount Street
Johannesburg
Tel: 011 463 8212
enquiriesjhb@livewell.care

www.livewell.care